



MONTHLY MEMBERSHIP PROGRESS REPORT

District 7 I

Results as of: 5/31/2016

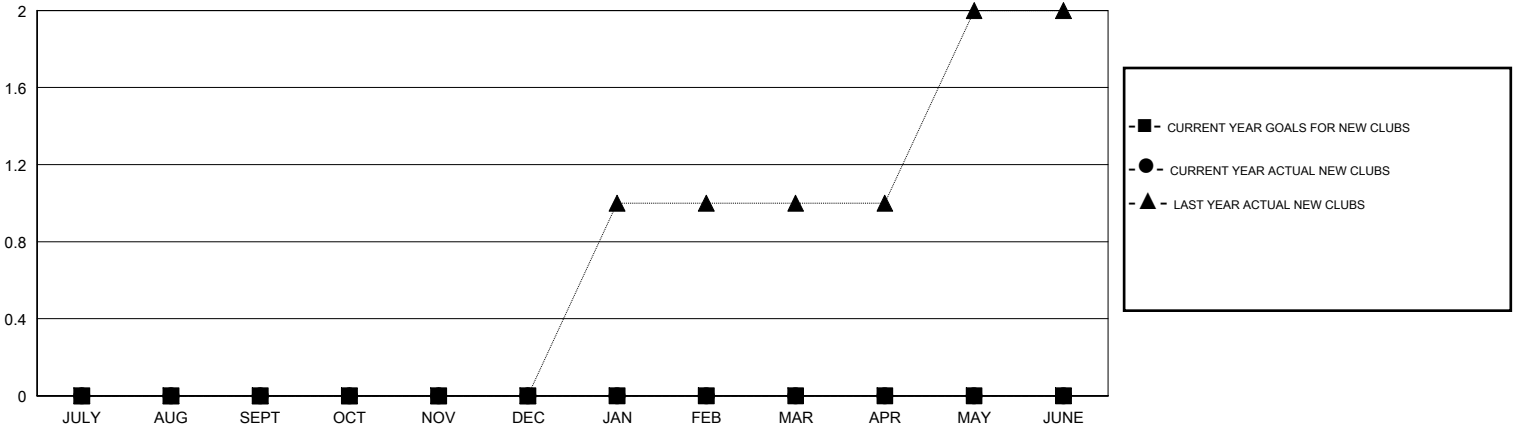
GMT: HAL GRIFFIN

LOCATION ARKANSAS

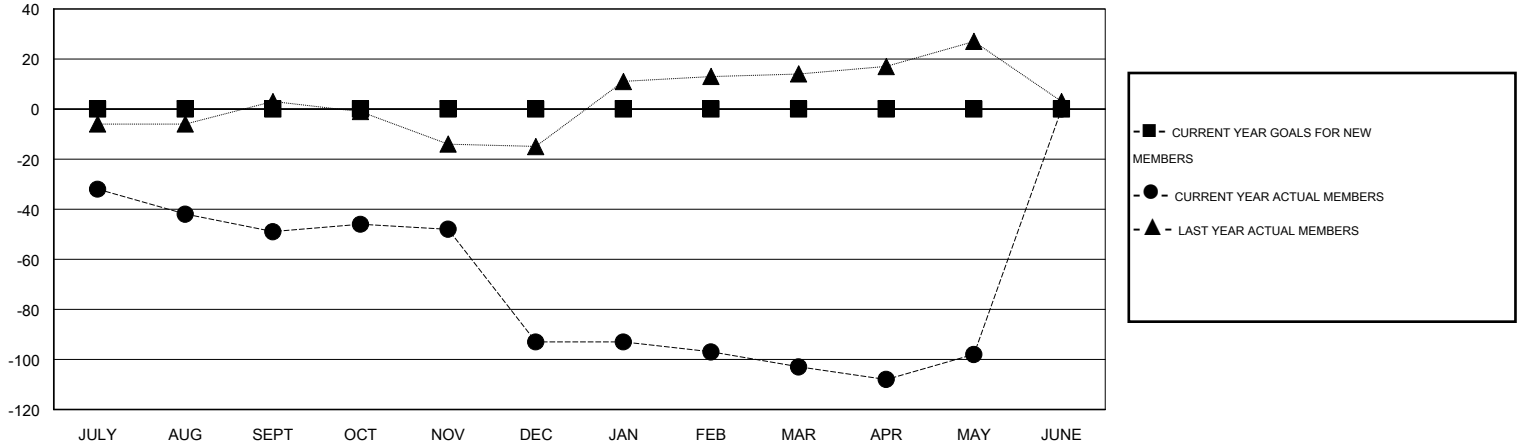
GMT CA 1

Clubs					Members				
RESULTS FOR 2015-2016					RESULTS FOR 2015-2016				
QUARTER	NEW CLUB GOAL	NEW CLUBS	DROPPED CLUBS	NET GAIN/LOSS	QUARTER	NEW MEMBER GOAL	CHARTER AND NEW MEMBERS ADDED	DROPPED MEMBERS	NET GAIN/LOSS
JULY/AUG/SEPT	0	0	0	0	JULY/AUG/SEPT	0	18	67	-49
OCT/NOV/DEC	0	0	3	-3	OCT/NOV/DEC	0	11	55	-44
JAN/FEB/MAR	0	0	0	0	JAN/FEB/MAR	0	29	39	-10
APR/MAY/JUNE	0	0	0	0	APR/MAY/JUNE	0	24	19	5

GOALS AND ACTUAL NEW CLUBS CUMULATIVE



GOALS AND ACTUAL MEMBERS CUMULATIVE



DROPPED CLUBS: 3	27 CLUBS OF 42 ADDED 1 OR MORE NEW MEMBERS	<u>GENDER DISTRIBUTION</u>	
<u>DROPPED MEMBERS</u>		MALE	596 (67.34%)
DECEASED	10	FEMALE	289 (32.66%)
CLUB CANCELLED	42	CLICK HERE FOR HEALTH ASSESSMENT DATA	
OTHER	128	FAMILY UNIT MEMBERS	130
TOTAL	180	HEAD OF HOUSEHOLD	64
		NON-HEAD OF HOUSEHOLD	66